

# GHD Monthly Newsletter

September 2020

The Global Help Desk (GHD) presents this monthly newsletter to introduce ourselves and let you know some recent domestic news, event information, and recent IBS news. All information presented in the newsletter is available online, and to read the full contents you'll need to be connected to the internet. We hope this information is useful to you. Also, visit the website Living in Korea at [www.ibs.re.kr/livinginkorea](http://www.ibs.re.kr/livinginkorea). Hosted by IBS, it has hundreds of pages of contents and photos to help you thrive, not simply survive.

## Living in Korea Highlight

We all need hometown food. While we are figuring out how to address the issue for everyone, we want to point out Halal Restaurant Week Korea, which is an annual 2-month long program sponsored by the Korea Tourism Organization. This year the event starts September 1 and ends October 31. Their website is [www.hrwkorea.or.kr](http://www.hrwkorea.or.kr) which lists coupons, a restaurant guide, and more. The annual event and other religious-based information was [posted here](#).

## Domestic News



### Apply for Re-entry Permits Online

Reentry permits that are now required for foreign residents returning to South Korea from overseas is available online at [www.hikorea.go.kr](http://www.hikorea.go.kr)

[Click to see guide.](#)



### Guide to Reporting Changes in Alien Registration

Avoid unnecessary fine and nuisance with this guide to reporting changes in your foreigner registration.

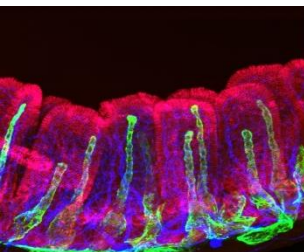
[Click to see guide.](#)

## IBS News & Events



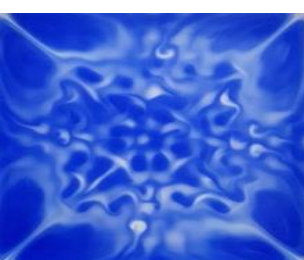
### 2020 IBS Conference on High-Resolution Earth System Modeling

IBS Center for Climate Physics welcomes you to IBS Conference on High-Resolution Earth System Modeling. This online conference will be held on October 12-14, bringing together world-leading experts and early-career scientists in earth system modeling to explore new scientific frontiers in earth system dynamics and high-resolution earth system model simulations. [Read more](#)



### Newly identified gut cells nurture lymph capillaries

A team of scientists led by KOH Gou Young at the Center for Vascular Research, within the Institute for Basic Science (IBS, South Korea) have identified new subsets of gut connective cells, which are crucial for lymphatic growth. Their new findings have been reported in the journal Nature Communications. [Read more](#)



### Seeing Chemical Reactions With Music

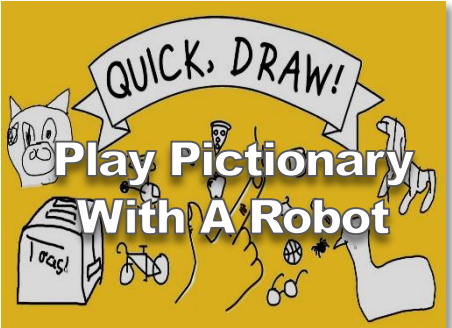
Scientists at the Center for Self-assembly and Complexity (CSC), within the Institute for Basic Science (IBS, South Korea) now see chemical reactions in the presence of music. The IBS research team has reported that audible sound can control chemical reactions in solution by continuously supplying energy sources into the interface between air and the solution. [Read more](#)

## Coronavirus Lockdown Pastime Tips

### Art & Culture



### Free Entertainment



### Workout & Learning



### Outdoor Trails

#### Daejeon



#### Ulsan



### Let's Learn Korean!

[Click here](#) for a good intro to the Korean language. And [click here](#) to find information on the free language classes hosted by IBS and other learning options.



From YouTube : Korean Unnie 한국언니

3 Basic Ways to Show Respect in Korea!

### GHD: Who We Are

**etners**  
EternalPartners

**ETNERS** co., LTD.  
KIM Minsun Celina  
Global Help Desk



7Fl., Uspace II-B 670, Daewangpangyo-ro, Sampyeong-dong, Bundang-gu, Seongnam-si, Gyeonggi-do, Korea

**etners**  
EternalPartners

**ETNERS** co., LTD.  
Yongtaek Seo  
Global Help Desk



7Fl., Uspace II-B 670, Daewangpangyo-ro, Sampyeong-dong, Bundang-gu, Seongnam-si, Gyeonggi-do, Korea